

EXHIBIT I

Olmsted in Chicago: Jackson Park and the World's Columbian Exposition of 1893

Jackson Park is a nationally significant landscape on the south side of Chicago, famed for its connections to Frederick Law Olmsted and Daniel Burnham, and as the site of the 1893 World's Columbian Exposition. This session will explore the history of the park, provide an opportunity to experience the fair virtually in the real-time reconstruction model of the exposition under development at UCLA, and discuss techniques for preserving this valuable historic resource.

Jackson Park is one of the most significant and complex historic landscapes in Chicago and the nation. Originally designed by Olmsted & Vaux in 1871, the site was redeveloped by Olmsted and Daniel H. Burnham as the fairgrounds for the 1893 World's Columbian Exposition. The firm of Olmsted, Olmsted, and Elliot was then hired to transform the site back into parkland in 1895. Later additions were made by South Park Commission in-house designers between the 1910s and the 1920s and Chicago Park District landscape architects in the 1930s.

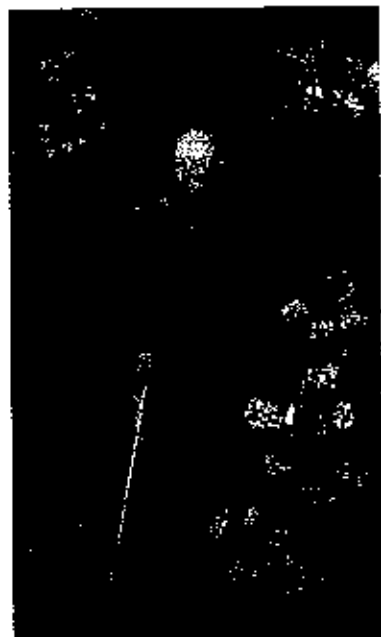
This session will focus on how to better understand a site with multiple layers of significance, and provide an overview of the site's development, context, and the design contributions of its creators in its various phases. An in-depth discussion of the World's Columbian Exposition will feature a tour of the real-time visual simulation model being developed by the Urban Simulation Team at UCLA. This computer technology allows an unprecedented opportunity to virtually explore Olmsted's work on the exposition and radically alter our understanding of this historic urban environment. The Wooded Island – the main landscape feature of the fair – was recently added to the computer model following over a year of research on Olmsted and his contribution to the exposition.

The session will also explore preservation efforts to date including the restoration of the Jackson Park Perennial Garden, the Japanese Garden on the Wooded Island, the reconstruction of the smaller nesting islands that historically dotted the east and west lagoons, and the adaptive re-use of the Bathing Pavilion which utilized new landscape designs in the courtyard areas. The session will also explore efforts to identify ways in which historic preservation can enhance sustainability (such as the nesting islands) and resolve conflicts with park programming and landscape management about preservation issues (such as impacts by fishermen and boaters). It will also allow for a discussion about the remarkable new simulation technology and future implications to the field of historic landscape preservation.

Speaker Bios

Julia Sniderman Bachrach is the historian and preservationist for the Chicago Park District. She is the author of *The City in a Garden: A Photographic History of Chicago's Parks* and *Inspired by Nature: The Garfield Park Conservatory and Chicago's West Side*. She contributed to other publications including the *Oxford Companion to Gardens* and has curated numerous exhibitions including *A Force of Nature: The Life and Work of Jens Jensen* at the Chicago Cultural Center in 2002. Julia received a National ASLA Honor Award in 2003, and a National Stewardship Excellence Award by the Cultural Landscape Foundation in 2008.

Lisa M. Snyder is both a senior member of the Urban Simulation Team at UCLA and an associate director of the Experiential Technologies Center, an affiliate of UCLA's Institute for Digital Research and Education. Her research focuses on use of interactive computer technology for the study and teaching of historic urban environments. Through the Urban Simulation Team, she is currently developing a highly detailed, real-time reconstruction of the World's Columbian Exposition of 1893. For the Israel Antiquities Authority she has also created reconstructions of the Herodian and Umayyad Temple Mount that are installed in the Davidson Center in Jerusalem.



John Singer Sargent portrait of Olmsted, 1895.



Daniel H. Burnham, 1892. Photo by Lawrence L. Sells, 1978.



Henry Sargent Olmsted, 1892. Photo by Lawrence L. Sells, 1978.



HENRY SARGENT
OLMSTED
Landscape Architect